



Commitment, Integrity & Accountability



CAPABILITY STATEMENT

2022





Commitment, Integrity & Accountability



Contents

- 4 Profile
- 4 Why Choose Santrix?
- 5 Services
- 6 Our Team
- 6 Our Process
- 7 Our Clients
- 10 Get In Touch





Profile

Santrix Diesel is a leading provider of specialised technical support personnel, for Hitachi, Liebherr, Caterpillar & Komatsu Excavators & Shovels throughout the Pilbara & Goldfield's WA , Bowen Basin QLD and Internationally in Central Asia.

The business founded in Mackay QLD in October 2011, and was soon providing services to three Pilbara based operations in WA. This initially short term operation evolved into a successful three year relationship and included expansion to the goldfields in the Kalgoorlie region. Following on, the Mackay and Bowen Basin division in QLD was also expanded with the business now employing over 90 skilled personnel. In 2017 the Santrix team were invited to Kyrgyzstan by Centerra Gold to improve reliability and hydraulic performance in their excavator fleet. Most recently, in 2021 the Santrix team have been engaged by Kaz Minerals in Kazakhstan (involved remotely, due to COVID-19), for performance and reliability reviews on their excavator fleet.

Santrix Diesel is now established as a quality provider of a wide range of services to a broad client base.

Our Mission

To deliver a premium service to our clients with a strong focus on safety and efficiency.

Our Values

Commitment, Integrity & Accountability

Why Choose Santrix?

- We have extensive experience and a widely established reputation for quality work.
- Flexibility to work with your project management teams or project manage on your behalf.
- A specialised in-house qualified team (hydraulic flow testing, performance and reliability of assets).
- Our innovative approach toward development of safer and more efficient techniques and procedures for hydraulic tune-ups and shutdown repairs.
- Our proven safety record.



Services

Santrix Diesel have the tooling and expertise to carry out:

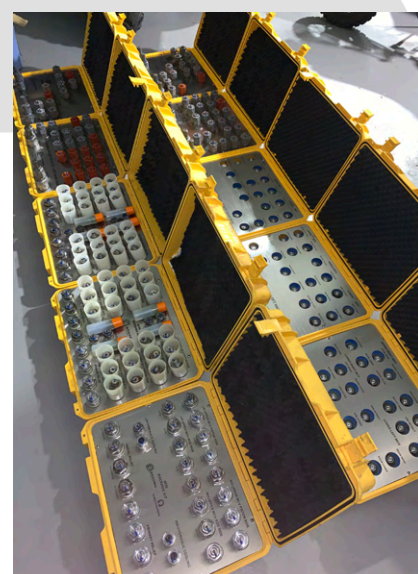
- Performance and reliability assessments
- Hydraulic flow testing and tuning
- Machine appraisals
- Demobilisations and remobilisations
- Excavator / Shovel PM clinics
- Product improvements
- Supervision
- Planning and execution of major shutdowns
- Development of live testing safety management systems
- Shutdown repairs
- Breakdown support
- Mobile workshop personnel

*Santrix Mining Components is our parts division which enables us to provide:

- Kawasaki and Rexroth Hydraulic Pumps & Motors
- Hitachi, Caterpillar, Liebherr & Komatsu Relief & Anti-Cavitation valves
- Hydraulic system upgrades and modifications
- Wide range of spare parts and service exchange components for all earthmoving equipment
- Agent for the Contamination Control product “FlangeLock”



SANTRIX
MINING COMPONENTS





Our Team

Our workforce consists of key personnel who are focused and have a strong work ethic. The team has extensive OEM training and experience in Hitachi, Liebherr, Caterpillar & Komatsu machinery.

We maintain stringent employment requirements that ensure our personnel are carefully vetted to meet high standards of workmanship, safety and ethics before being accepted as a member of the Santrix team. In-house training is provided to all employees for continuous improvement, and to promote a broad knowledge base across a wide range of machinery and products.



Our Process

We have remained LTI free since commencing operation and strive to maintain this by adhering to our company values of “Commitment Integrity & Accountability” These values are applied to all aspects of our work from customer relations, work quality to employee welfare.

Santrix has a strong focus on supporting the wellbeing of employees through constant welfare checks, and immediate action to support the best interest of the employee. Success of our process is evidenced through our high employee and client retention rate.

Our Clients



Rio Tinto

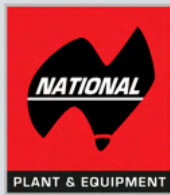
GLENCORE



HSE



THIESS



Rental Equipment You Can Depend On



LIEBHERR



Peabody



A GLENCORE COMPANY






Get In Touch





 **Nick Sant**
Managing Director
0418 411 531
nick@santrixdiesel.com


 **Linda Sant**
HR/Office Manager
0431 108 581
linda@santrixdiesel.com


 **Ben Balderston**
Field Service Manager
(East/West)
0448 930 660
fieldservice@santrixdiesel.com

 **Stacey Whittle**
Maintenance Admin
0407 170 497
admin@santrixdiesel.com


 **Karlene Mortensen**
Field Maintenance Scheduler
0448 862 911
maintenance@santrixdiesel.com


 **Accounts**
Remittance Advices & Invoicing
0407 170 497
accounts@santrixdiesel.com

 **Business Address:**
389 Newmans Road
Devereux Creek, QLD, 4753

 **Postal Address:**
PO Box 346
Marian, QLD, 4753

 www.santrixdiesel.com

 **Charlie Townley**
Sales Manager
0400 780 158
sales@santrixminingcomponents.com

 **Parts/Deliveries Address:**
402 Cowleys Road
Te Kowai, QLD 4740



 www.santrixminingcomponents.com